



VIVA VIREYA!

HAWAI'I CHAPTER AMERICAN RHODODENDRON SOCIETY

Volume 15

Issue 8

August 2010

Vireya of the Year
Taylori

Hawai'i Chapter Website: <http://www.hawaiiireyaars.org>

August President's Message

Wow, what a place John Mood has. He has 35 acres planted to both commercial fruit and the exotics he collects, identifies and propagates. About 25 of us went out for the tour. We had about a 2-½ hour exhaustive tour, celebrated Enny's birthday with a cake and snacks and then most went back out for another 1-½ hour tour of the bamboo and palms. Some of our members didn't finish looking and buying until evening. If you missed it, try to find another group going up and take look. For those of us who went, another look might also be worthwhile as information-overload hit long before even the first segment of the tour was over.

Our next meeting will be a talk by Dr. J. B. Friday on invasive tree species here on the Big Island. Dr. Friday gave this talk to the Master Gardeners which I greatly enjoyed. He is the University of

Hawaii Extension Forester for the State and is based in Hilo and can be an easily accessible resource for us. Please come as this should be a great meeting and we will have reports on the Orchid Show, the usual great pot luck, auction, raffle and truss give-away.

Cultural Questions: below this message, I've included a photo and a question. I would love to have input from our overseas members on this as well. The most likely answer will be in the next newsletter and if you have a Vireya question you need answered, let me know. If this works, we will try to make it a monthly feature. Send your thoughts to Joyce at davidandjoyce60@hotmail.com

Joyce Gay, Hawai'i Chapter President



Cultural Question:

I have a few Vireya cuttings which have been rooted for over a year. The old leaves are still green but there is no new growth. What can be done to stimulate these or should they be trashed?

Officers of the Hawaii Chapter ARS

President	Joyce Gay	(808) 966-5572	davidandjoyce60@hotmail.com
Vice Presidents	Dick Kruppa	(808) 967-7349	richardkruppa@hotmail.com
Secretary	Jurahame Leyva	(808) 966-6693	jurahame@kurtistownorchids.com
Treasurer	Richard Miller	(808) 967-4371	richardandalison@hawaiiantel.net
Newsletter Editor	Jane Adams	(808) 345-0959	jane@whitecloudnursery.com

Directors: Ray Schimpf, Bettye Wakabayashi, Ron Phillips, Dale Dinsmore, Richard Rhodes, Mitch Mitchell (Emeritus)

Mitch's Corner

Here are some more Vireya species from my collection.

R. buxifolium is from Malaysia (Borneo, Sabah, Mt. Kinabalu), found in forests above 3100m

R. celebicum is named after the island on which it was found, Celebes (now Sulawesi). There are two color forms, the commoner pink and red. The pink form is said to be more vigorous than the red.

R. christi is named after Konrad H. Christ, Swiss fern specialist who was professor of botany at Basel.



Notes

Treasurer's Report by Richard Miller

Zoo: \$4761.70
Kimalia: \$1372.30
Club: \$5783.00

The club's Paypal account is not working at this time. When it is once more available, we'll post a notice in the newsletter. At this time, this will mostly affect those purchasing seed from the Vireya seed bank run by Sherla.

Newsletter Delivery

If you receive the newsletter via the Post Office, but also have email and can receive .pdf files (Acrobat Reader or Mac Preview), we'd like to offer an alternative. More and more people are online these days, and receiving the newsletter as an email attachment is easy, fast and saves in postage. You'll also see the pictures in much better resolution on the screen. Please let us know if you'd like to try it out. We'll send it both ways for 2 months to ensure that you are happy with the

email version. Please realize that this is also reversible! If you end up being unhappy with the outcome, you can go back to paper copy at any point. I like the email version because I can place the files in a single folder on my hard drive, and search the contents of the files for phrases or words.

Planning A Trip?

For our off-island, out of state or international recipients, we'd like to extend an very warm welcome to the Big Island. We hope that you can arrange your travels to coincide with one of our meetings or events. Visitors are always welcome. Often we see your names on the mailing lists or in the directory, or we've had the pleasure of your company at one of our seminars or conferences. E komo mai! Come on over and see us again. You can email any of our officers or directors, or those within the club you are most familiar with, and we'll help you arrange garden visits. Our meetings are the 3rd Sunday of every month, other than Christmas.

*A Beautiful Sunday Excursion
by Sherla Bertelmann*

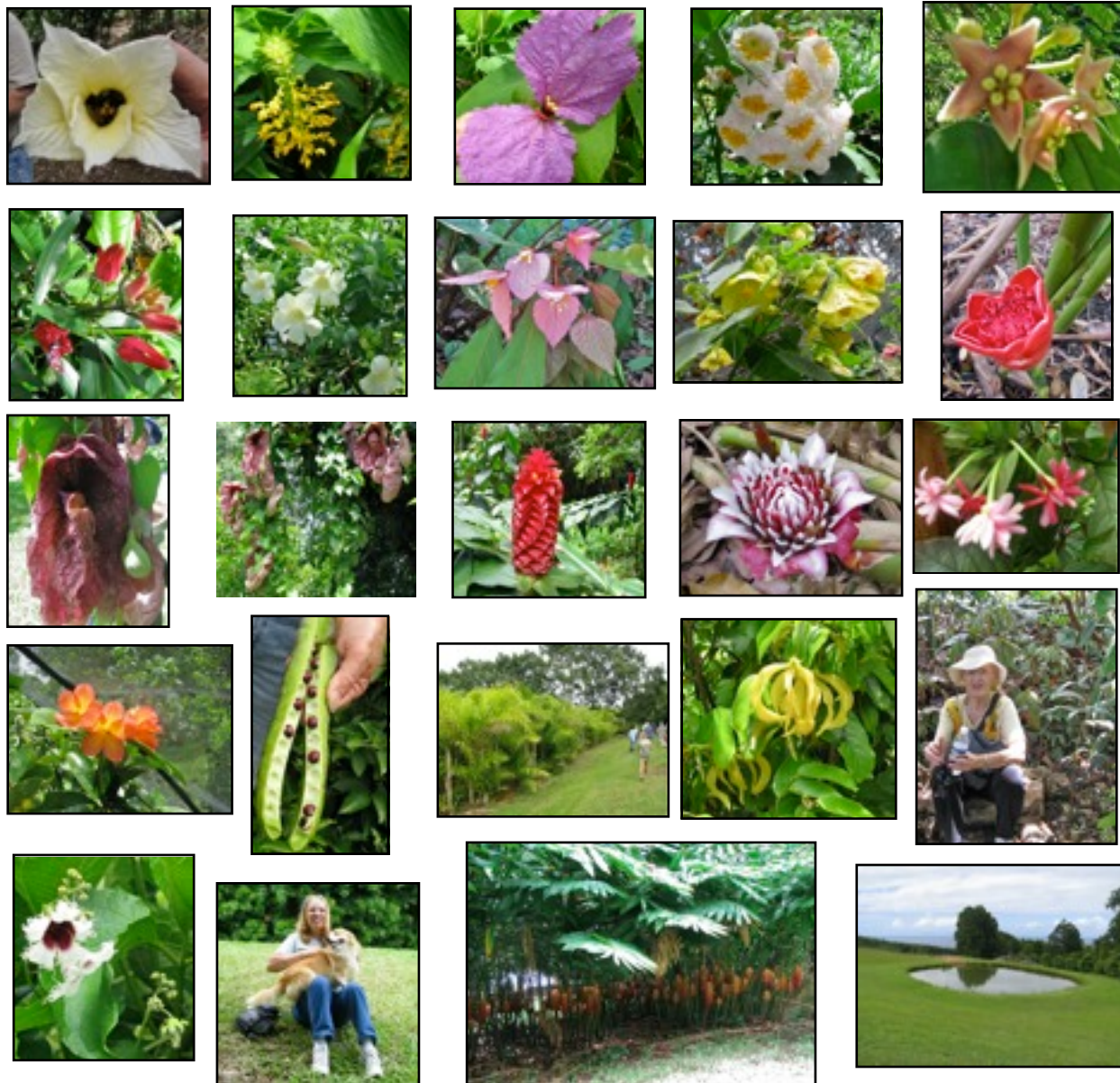
July's meeting was a visit to John Mood's "Ninole Orchard", a working agroforestry farm. John has a Bachelor's degree in forestry and a Master's degree in ethno-botany. Besides working with ornamental ginger since 1976 he also made regular trips to Sabah (Borneo) from 1989 to 2001.

John shared a lot of information about each plant, from their origins to their practical uses and/or potential. He also shared his planting mix "redwood soil conditioner mixed with large perlite". He uses it for everything...even vireya...very successfully. His love of the exotic in flowers, fruits and trees are evident everywhere. Enough said..



John Mood greeting us.

They say, "A picture is worth a thousand words." Enjoy!
(You can reach John at zingiber@warmlava.com.)





***Thank you, Enny Van Delden,
for giving us a reason to
celebrate.
Happy 94th Birthday
with many more to come.
Big Hugs!***



***Komo Mai! Come on in, Welcome!
by Sherla Bertlemann***

Richard and I recently invited Mitch Mitchell to lunch. “*Restaurant or shady tree?*” I asked. Mitch replied, “*How about under a tree at the zoo? I’ve long said that is the most under rated picnic location in these part.*” He is absolutely right. Besides finding a picnic table & shade, we found blooming vireya both in the species garden and on the hillside.



The species garden is undergoing a face-lift that includes a new layer of cinder, lifting plants higher and rock borders with hapu’u chunks circling individual vireya plants. Check out the photo to the right of three *R. jasminiflorum* with the new face-lift.



Blooming in the species bed were *R. pleianthum* and *R. javanicum* (yellow). On the hillside the mass planting of *R. herzogii* X *R. aurigeranum* (L272) was in full bloom. I couldn’t resist climbing up to get a photo and, when I did, I also found ‘Flamenco Dancer’ in it’s full glory.



The vireya garden at the zoo is a project our chapter can be proud of. But, it didn’t get that way without the dedication of a handful of volunteers who gather the 4th Sunday of the month for maintenance of the garden. There can never be too many volunteers...how about you? Besides the ambiance of the zoo and comradeship, you’ll never know what will you’ll find in bloom.

Komo Mai!

A Favorite Annual Event on the Big Island by Sherla Bertelmann and Jane Adams

Jane: Every summer in very early August, the Orchid society has their annual show in Hilo. Located in the Edith Kanaka'ole Tennis Stadium, this show has been a mainstay for avid gardeners for many many years. Every year they graciously offer us a booth to display vireyas and information about our ARS chapter. In talking to Sherla about our history with this show, she thought that the first time we participated was way back in 1998. Wow, if that was the year, then our society had just gotten its start a bare 16 months earlier! Personally, I remember the year we moved here from Maui and attended the show while on an inspection trip for the property we'd bought. There were Mitch and Chuck manning the booth. The show always brings together a core group of people who donate plants and trusses, design the scene and then set up the booth. Others donate their time to be at the booth when the show is open to greet those who stop by, show them how to root cuttings, talk about cultivation and generally act the Vireya Enthusiasts we all are! Many of our own members are also members of the Orchid society, so it's a match that's very compatible.

Here is Sherla's report on the setup for this year's show, which happened yesterday, so you are getting a "hot off the presses" report here!

Sherla: This year's booth had no backdrop of plants. It is a free floating space. We actually have 3 focal points. The first everyone will see is the table with trusses and our HI Chapter banner. In the middle is our member's table... all by itself. At the rear a tripod was created with the 3 poster boards. One is the ALOHA side showing our zoo project. The second one shows all the Vireya of the Year from 2002 to 2011 and the third side has vireya info with the map of vireya distribution in Malesia. Of course, we have our two benches placed at the right spots to read the boards. It came out nice but was difficult to get the whole display in one shot. The lighting in the place was another challenge. I'll have more photos when all the trusses are in place for next newsletter.

Here's our working crew (left to right): Dorothy, Richard, Elaine, Ronnie, Dale, Sherla, Bill, Ray, and Jurahame. Missing from the photo are Bettye and Jane. The second photo shows 2 sides of our 3 sided poster display.



Next Chapter Meeting:

When: August 15, Potluck at 12:00pm, meeting at 1:00pm

Where: Kea'au Community Center.

Program: Talk by Dr. J. B. Friday on the invasive tree species here on the Big Island.

Housekeeping Notes

Very important truss reminder! Inspect your trusses before bringing them to the meeting. Fire ants were found recently. We don't want to spread invasive species, especially such a destructive one!

Another Reminder! Don't forget your non-disposable plates and utensils! ...doing our part to live light on our island.

August Clean-up Crew: Richard and Allison Miller, Jane and Pete Adams, Elaine Inouye, and John Callahan

Calendar of Coming Events:

Sunday, August 15: Regular chapter meeting, 12:00pm, meeting at 1:00pm.

Sunday, August 22: Regular 4th Sunday Zoo work party. 12:00pm - 3:00pm.

Sunday, September 19: Regular chapter meeting at the Kea'au Community Center. Potluck at 12:00pm, meeting at 1:00pm.

Viva Vireya!

Edited by Jane Adams
jane@whitecloudnursery.com
808-345-0959

**Hawaii Chapter – ARS
P.O. Box 1963
Kea'au, HI 96749**